

Poppies

Anchor

Materials Required

Anchor Stranded Cotton - refer to instructions for shades
Aida fabric

Instructions

Using the cross stitch chart below, start your work in the centre of the Aida band/fabric and follow the colour reference.



FRENCH KNOT

use 2 strands and wrap around the needle twice

SHADE

Ⓛ 265



HALF CROSS STITCH

SHADE MTRS

use 1 strand

▣ 301 1

▤ 945 1

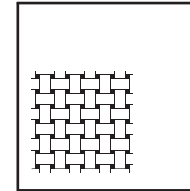
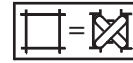


HALF CROSS STITCH

SHADE MTRS

use 2 strands

◻ 888 1



SHADE MTRS

ⓧ 11 3

● 22 2

Ⓜ 259 2

○ 264 2

Ⓛ 265 2

★ 267 1

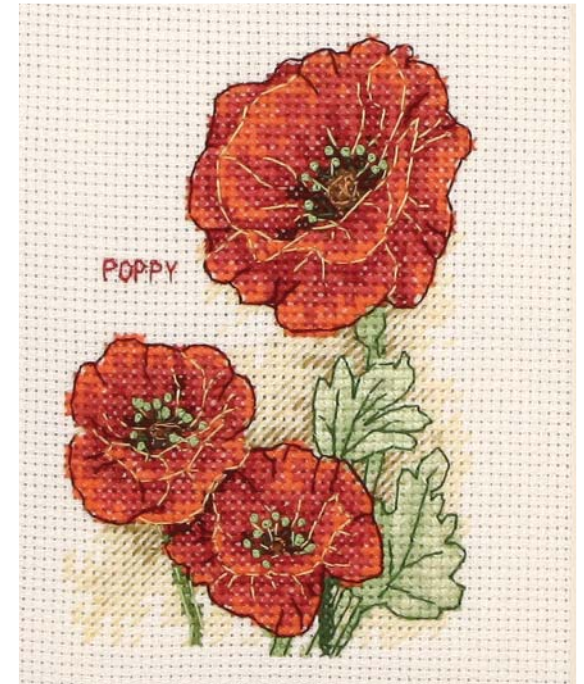
◀ 269 2

△ 329 3

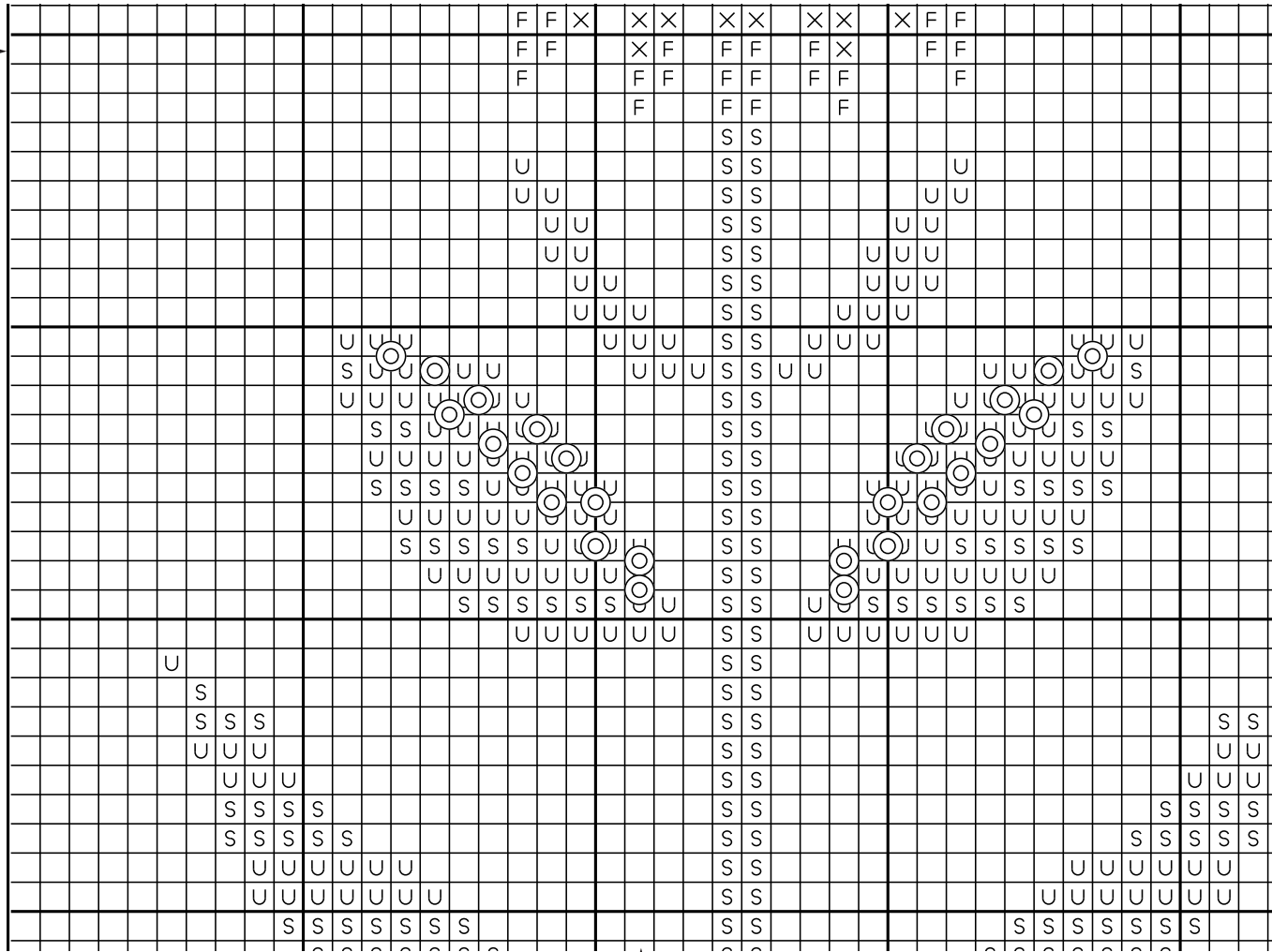
■ 360 1

▲ 371 1

⊠ 1025 3

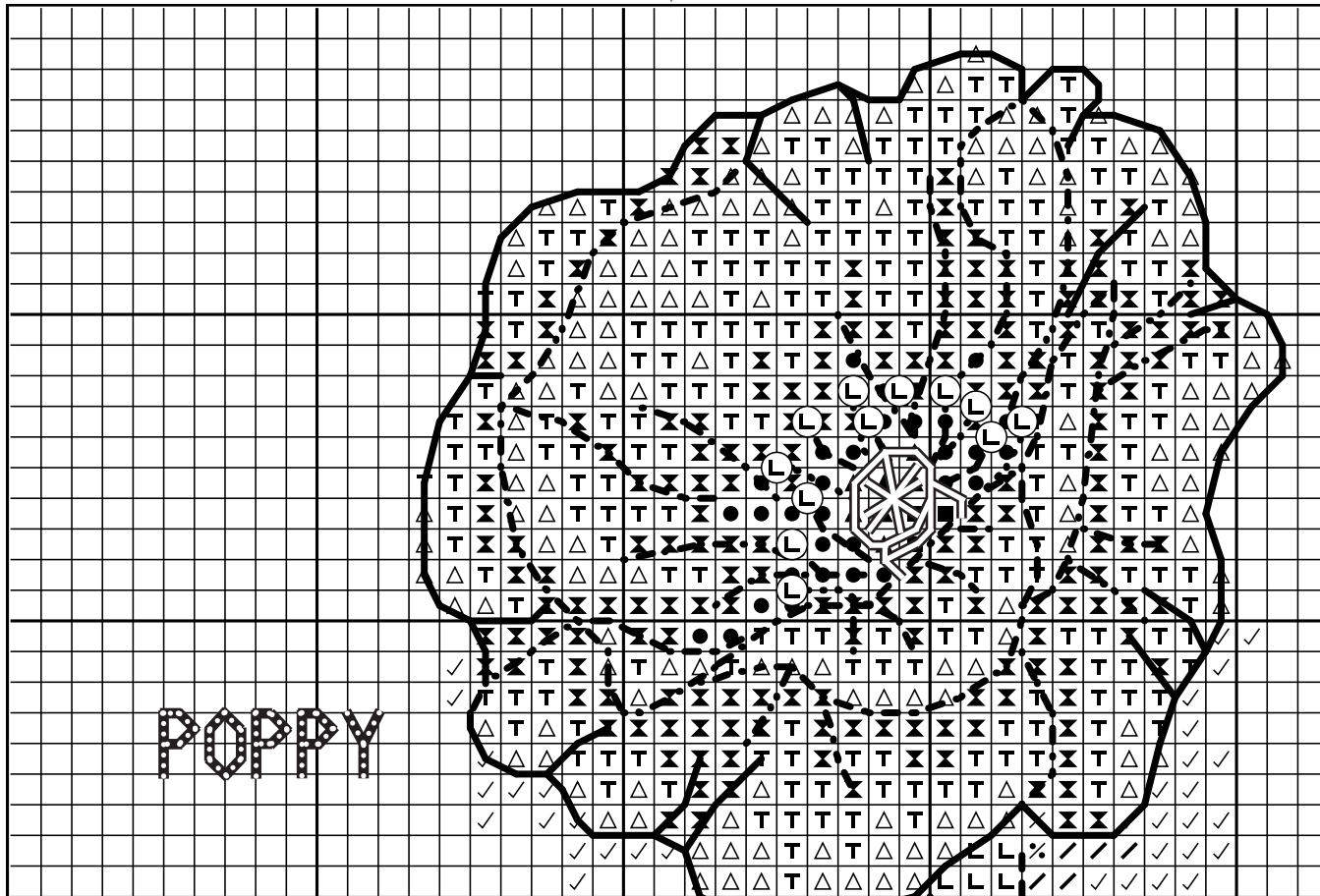


Anchor



IMPORTANT
THE CHART
SECTIONS FIT
TOGETHER.
PLEASE IGNORE
THE GAPS WHEN
STITCHING

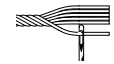
CENTRE OF ▼ DESIGN



IMPORTANT
THE CHART
SECTIONS FIT
TOGETHER.
PLEASE IGNORE
THE GAPS WHEN
STITCHING

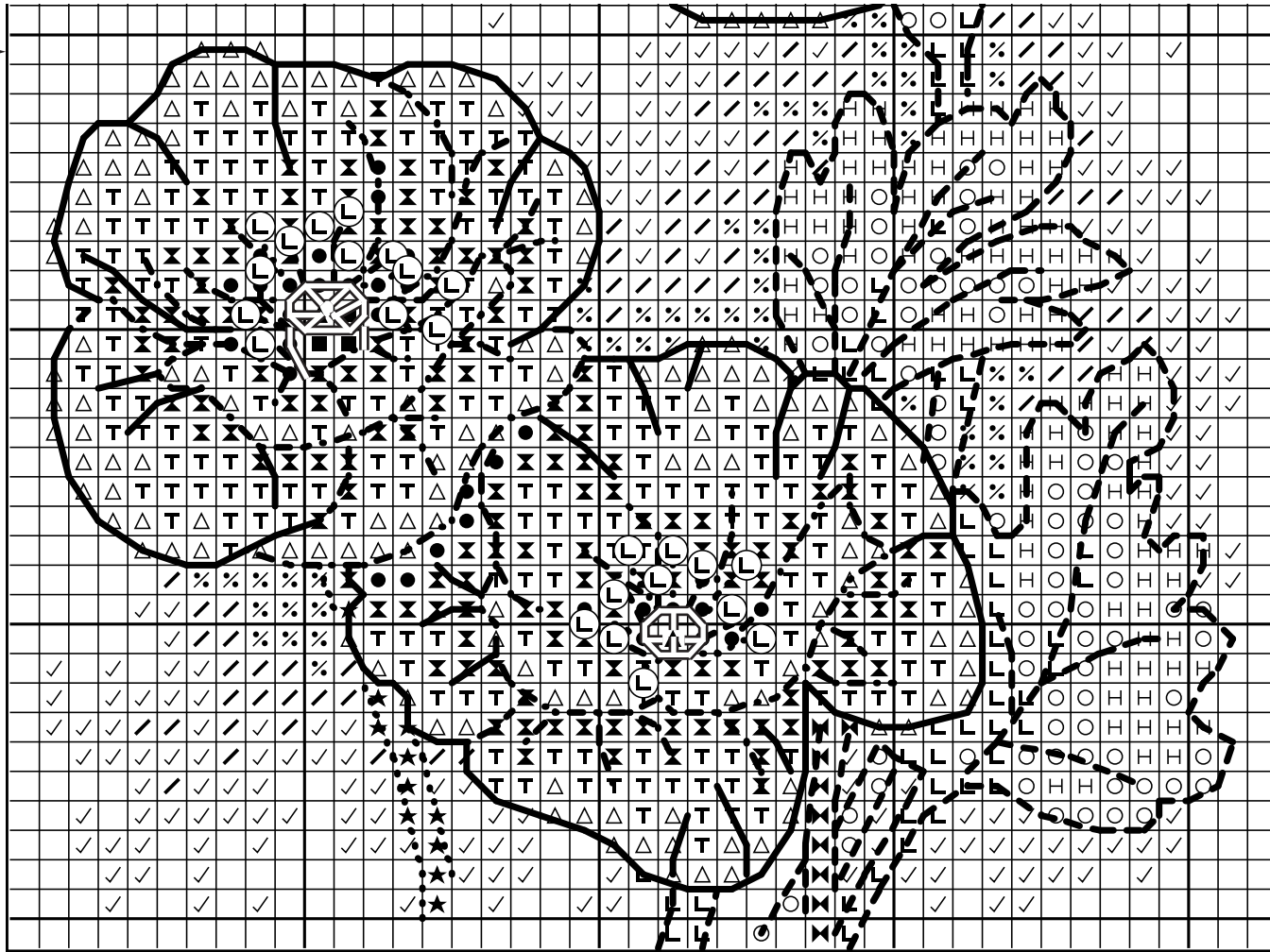


BACKSTITCH



use 1 strand

	SHADE	MTRS
	22	
	265	
	269	
	311	2
	369	2
	1025	



IMPORTANT
THE CHART
SECTIONS FIT
TOGETHER.
PLEASE IGNORE
THE GAPS WHEN
STITCHING